

MAY 18 2018

Index No. E-15

# CERTIFICATE OF LOCATION OF GOVERNMENT CORNER

NORTH QUARTER Corner of Section 10, Township 108 N, Range 39 W

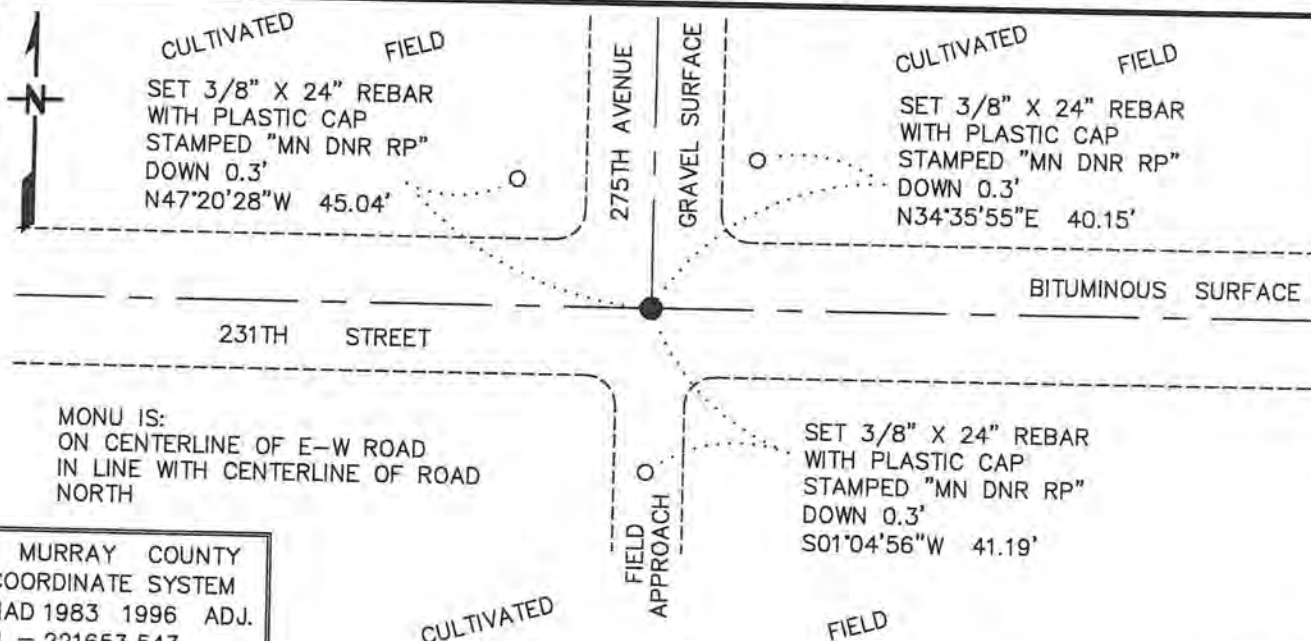
5TH Principal Meridian, State of Minnesota, County of MURRAY

At the corner location shown on the sketch:

On 10/18/2017 found a PK NAIL

left monument as found, lowered monument, removed monument (explain)

On 10/18/2017 Placed a 3/4" X 6" REBAR WITH PLASTIC CAP STAMPED "MN DNR LS 17003", DOWN 0.05', IN PLACE OF FOUND PK NAIL



MONU IS:  
ON CENTERLINE OF E-W ROAD  
IN LINE WITH CENTERLINE OF ROAD  
NORTH

MURRAY COUNTY  
COORDINATE SYSTEM  
NAD 1983 1996 ADJ.  
N = 221653.543  
E = 566529.609

BEARINGS ARE COUNTY ORIENTATION

Statement of evidence for this corner location is on back of this page.

FEBRUARY 2018  
WMA 02039

I hereby certify that this plan, specification, or report was prepared by me or under my direct supervision and that I am a duly Licensed Land Surveyor under the laws of the State of Minnesota.

SIGNATURE Bruce W. Sheppard  
BRUCE W SHEPPERD

DATE 5/15/10

License Number 17003

North Quarter Corner of Section 10, Township 108 North, Range 39 West  
Page 1 of 3

The DNR Division of Lands and Minerals contacted the following for survey information:

Website - [mngeo.state.mn.us](http://mngeo.state.mn.us) for GLO plat and field notes  
Website - [murray-countymn.com](http://murray-countymn.com) for section and quarter section corner information  
Murray County Recorder's Office  
Zieske Land Surveying, Inc. of Windom  
Madsen Land Surveying, Inc. of Fairmont  
Bonnema Runke Stern, Inc. of Willmar

1861 U.S. General Land Office notes, obtained from [mngeo.state.mn.us](http://mngeo.state.mn.us), show the corner marked with a post, in a mound.

1930 October 14, Surveyor's Record Book A, page 242 obtained from the Murray County Recorder's Office, which is also on [murray-countymn.com](http://murray-countymn.com), states the following about the corner:

"Found stone, fence line south on line and 31.3 feet distance"

The corner is shown:

2644.0 feet from the northeast corner of Section 9

2644.0 feet from the northeast corner of Section 10

No Surveyor's Record Book A, page 249 obtained from the Murray County Recorder's  
Date Office, which is also on [murray-countymn.com](http://murray-countymn.com), shows corner but does not indicate what kind of monument was found or set. The corner is shown:

2644.0 feet from the northeast corner of Section 9

2644.0 feet from the northeast corner of Section 10

Survey states – *see page 240*. The following note is on page 240:

Surveyed by D.L. Bigham, County Surveyor of Redwood County, Minn. June 1901. Plotted by him July 5, 1901.

Original plat on file in office of Town Clerk of Holly Township.

This record made by J.R. Johnston, Co. Surveyor of Murray Co from original plat. June 12, 1915.

1915 June 19, Surveyor's Record Book A, page 278 obtained from the Murray County Recorder's Office, which is also on [murray-countymn.com](http://murray-countymn.com), contains a survey by J.R. Johnston, Murray County Surveyor. Survey shows corner but does not indicate what kind of monument was found or set and no distances are shown to it. The corner was used to establish the center of Section 10.

North Quarter Corner of Section 10, Township 108 North, Range 39 West  
Page 2 of 3

- No Date A Surveyor's Record Book that shows Section 3, T108N, R39W, obtained from murray-countymn.com, shows a stone at the corner but does not indicate if it was found or set. The following ties are shown to the corner:  
RP tack in corner fence post, south on line 31.0 feet  
RP tack in blazes telephone pole, northeast, 46.4 feet
- 1991 April 4, ties to section and quarter section corners, obtained from Website - murray-countymn.com, states that a 3/8 inch iron pin was found at the corner, 0.9 of a foot below grade.
- 1992 April 8, ties to section and quarter section corners, obtained from Website - murray-countymn.com, states that a 1/2 inch by 8 inch rebar was placed above the 3/8 inch iron pin found on April 4, 1991. The following ties are shown to the corner:  
nail and cap in power pole, northeast, 59.57 feet  
nail and cap in power pole, northwest, 59.55 feet  
nail and cap on west side of sign post, south, 47.92 feet
- 2004 August, a Certificate of Survey in the NE 1/4 of Section 10, by Perry L. Zieske, PLS 23008, obtained from Zieske Land Surveying, Inc, shows a found monument symbol at the corner but a description of the monument is not given. The corner is shown:  
2635.08 feet from the northeast corner of Section 10
- 2005 June 9, ties to section and quarter section corners, obtained from Website - murray-countymn.com, states that Zieske Land Surveying located a PK nail at the corner from Murray County Highway Records.
- 2013 January 24, United States Public Land Survey Corner Certificate regarding Section 3, Township 108 North, Range 39 West, obtained from the Murray County Recorder's Office, prepared by Perry L. Zieske, PLS 23008, shows a monument symbol at the corner but a description of what was found or set is not given. The corner is shown to have the following NAD 1983 (2007 Adjustment) Murray County Coordinates:  
N = 221653.52  
E = 566529.61

2017 September 19, the DNR Division of Lands and Minerals received an email from Keith Rossow, Assistant Murray County Highway Engineer, that contains information about this quarter corner:

“Just to let you know that CSAH 22 was reclaimed and paved in 2004. In the reclaim process they went a couple inches into the gravel base under the pavement so the iron pin is more than likely gone. We shot the pin with the GPS before the project and placed the PK Nail after it was paved. As far as the stone that could be gone from the regrade project in 1967. So you might have a hard time finding anything.”

2017 October 18, the DNR Division of Lands and Minerals found a PK Nail at the corner. Then removed the PK Nail and scanned the area with an electronic metal detector but no metal attraction was obtained. A  $\frac{3}{4}$  inch by 12 inch rebar with a plastic cap stamped “MN DNR LS 17003” was set, down 0.05 of a foot, in place of the found Mag Nail and found it to be:

on the center line of east-west 231<sup>st</sup> Street (bituminous surface)  
in line with the center line of 275<sup>th</sup> Street north

A search was made for the record ties but no evidence of them were found.

Analysis of the above information led the DNR Division of Lands and Minerals to conclude that the  $\frac{3}{4}$  inch by 12 inch rebar with a plastic cap stamped “MN DNR LS 17003” which was set in place of a found PK Nail marks the location of the corner.